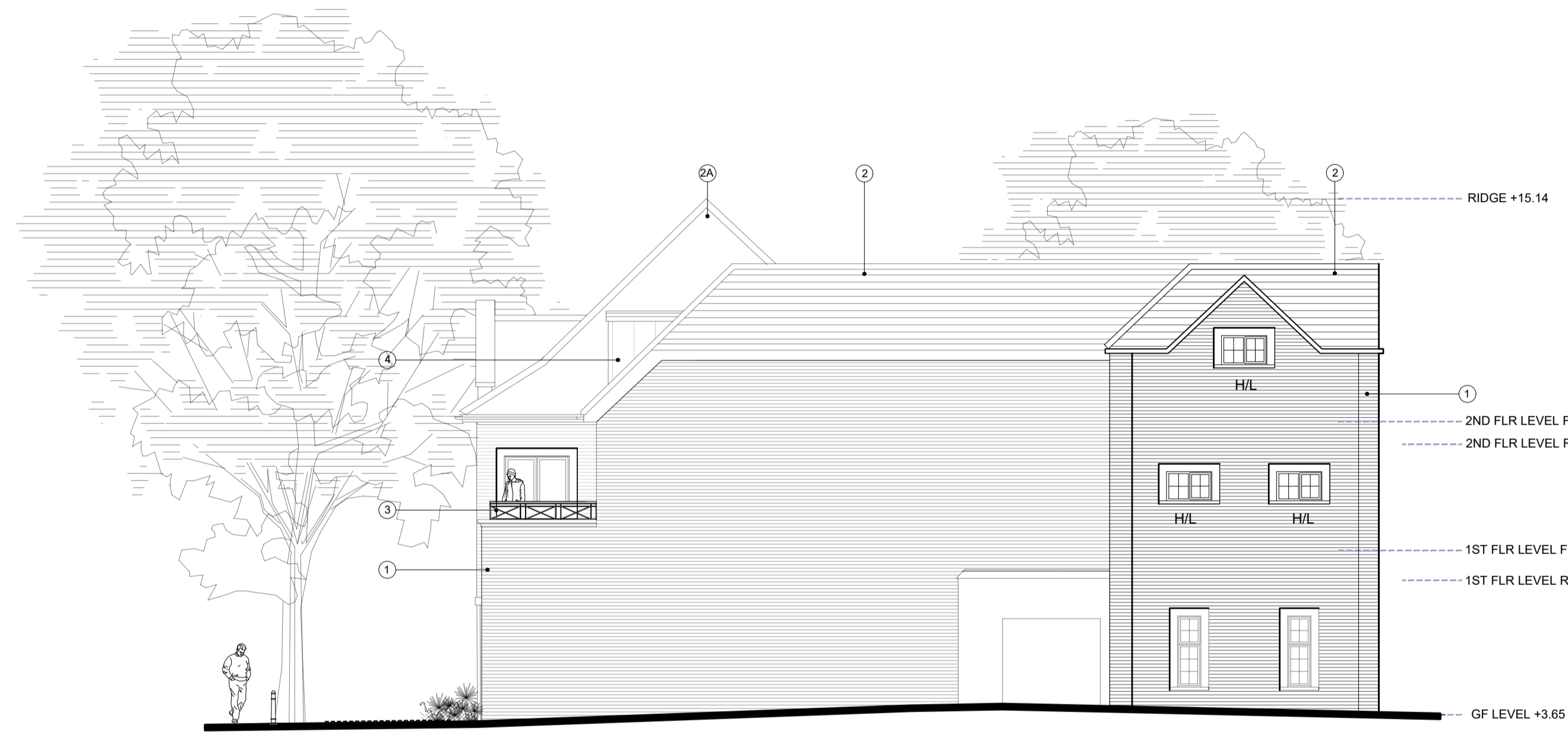


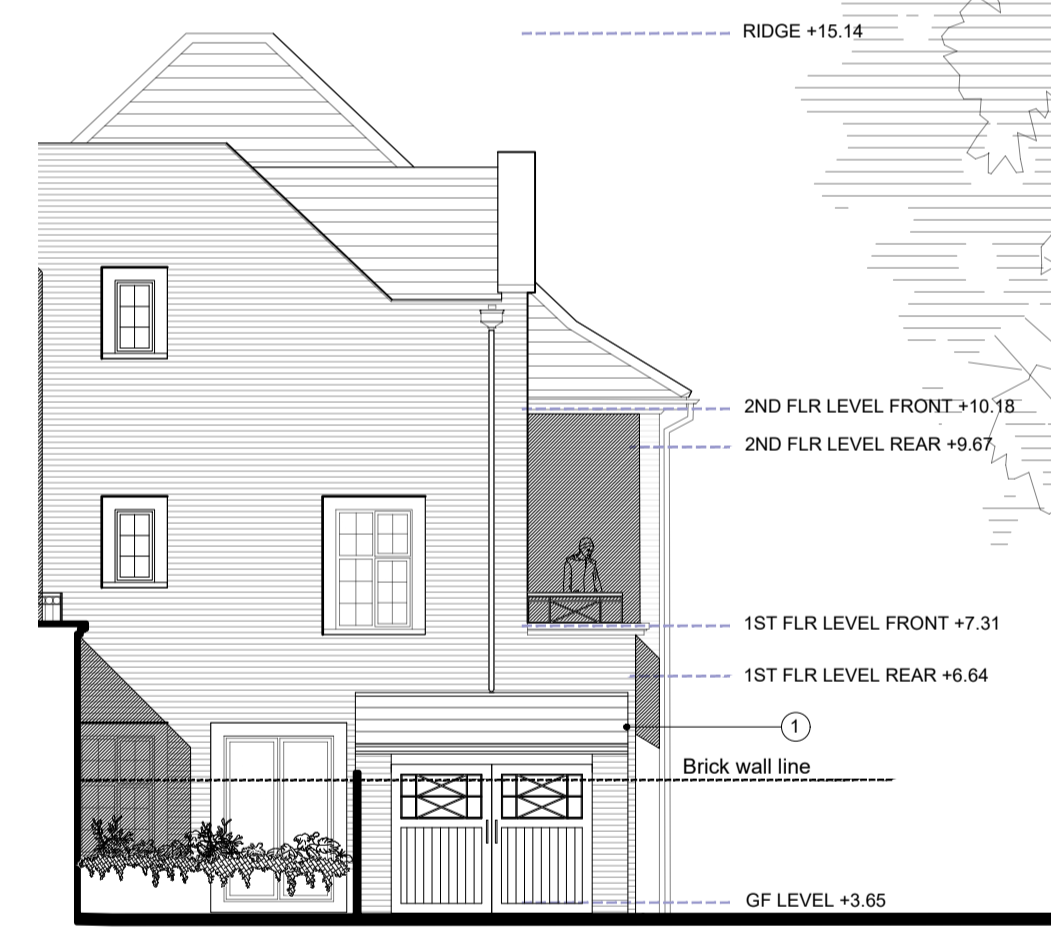


The Cricketers as approved

North-East Elevation

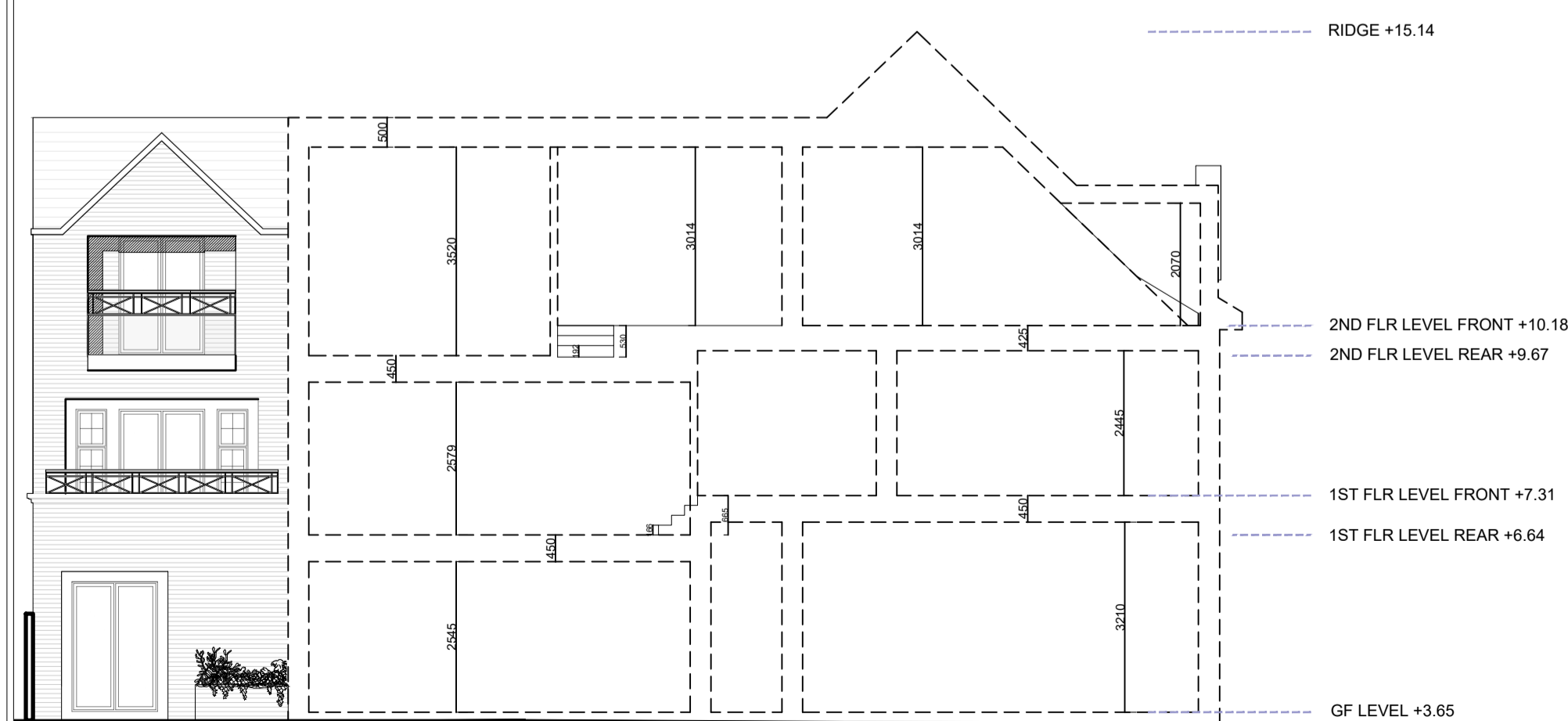
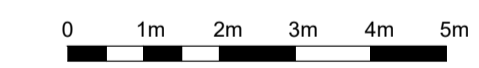


South-East Elevation

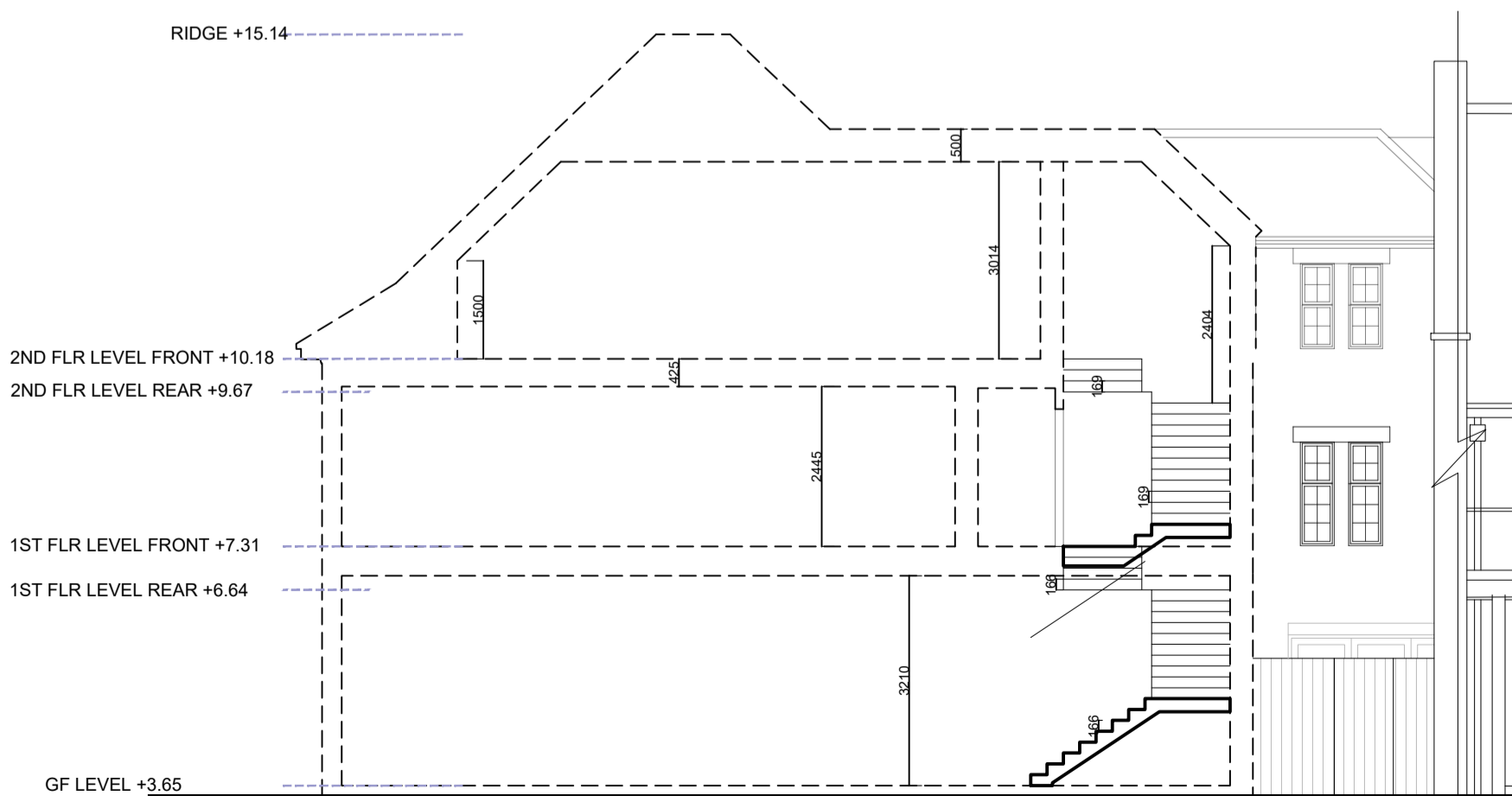


Part North-East Elevation

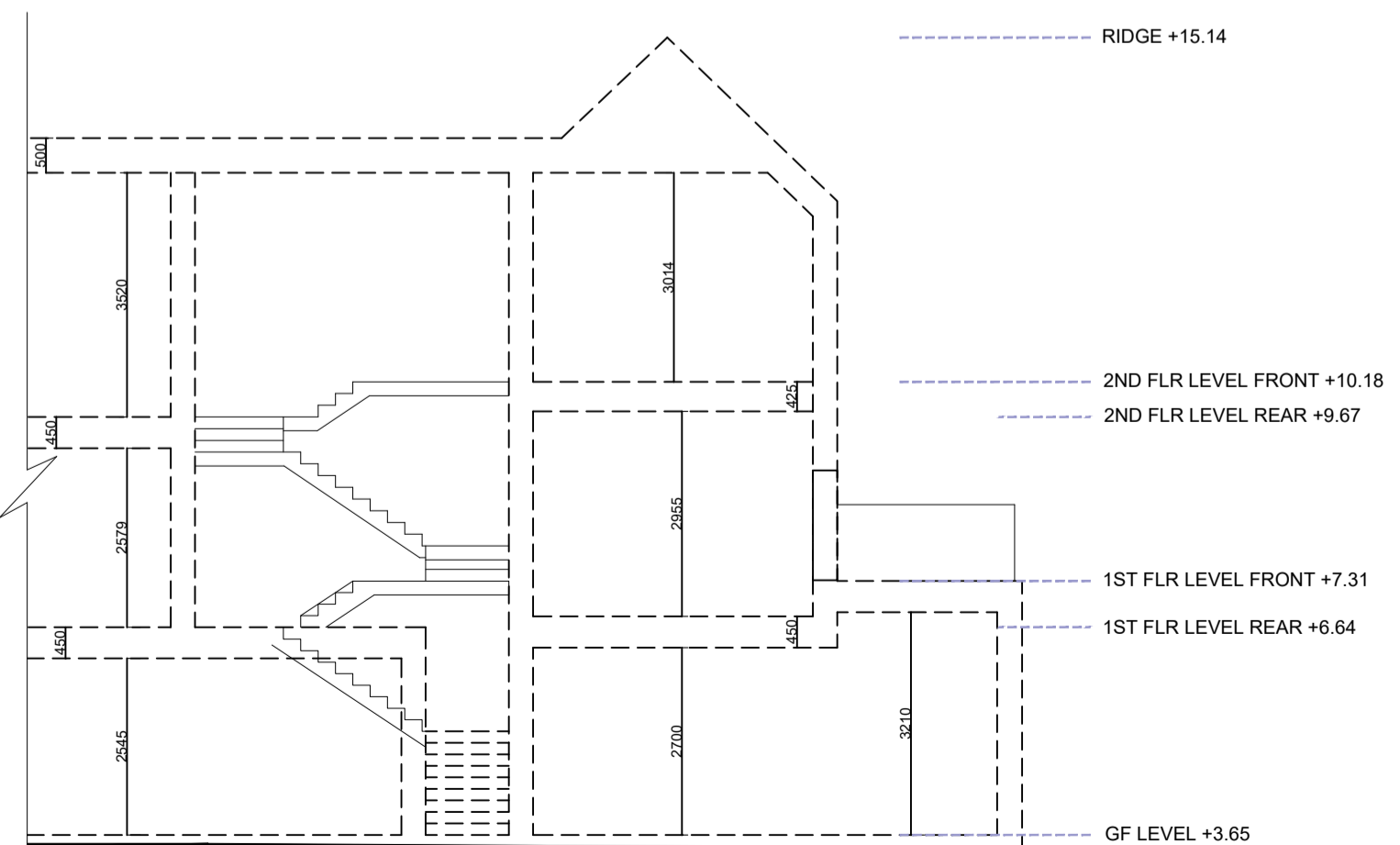
- Key**
- 1 Red/brown brick to match existing
 - 2 Slate tiles
 - 2A New slate tiles
 - 3 Steel balustrade
 - 4 Lead dormer
 - 5 Wooden bin store
 - 6 Stone surrounds to match existing
 - 7 Stone surrounds to match existing
 - 8 Planters
 - 9 1.5m high close boarded timber fence
 - 10 Mimic original fire doors
 - 11 Stone coping to match red sandstone/terracotta colour



Section A



Section B



Section C

REVISIONS		DO NOT SCALE	
REV	DATE	NOTES	INITIAL
A	July	Revised planting to forecourt Revised key and additional notes Minor amendments including door to south-east elevation and angle of roof to extension of front	KER
B	Sep	Revised planting to forecourt Revised key and additional notes Minor amendments including door to south-east elevation and angle of roof to extension of front	KER
C	Sep	Terrace added to North-East Elevation and Section A Relocation of sign and bike store	KER
D	10.11.20	North-east elevation and Section A revised to include larger private amenity to flats 7, 8 and 9	NG
E	Jan 2021	Section A revised to include new location for front door and window to flat 1	KR
F	Feb 2021	Section A revised: replaced door and window to flat 1 with double doors onto terrace	KR
G	May 2021	Amended front forecourt to include low-level bollards and pedestrian deterring paving	KR

STATUS
Planning

Notes

Howard Fairbairn:MHK
chartered architects

Howard Fairbairn Project Services Ltd
Lambourn House, Redlands
Coulston
Surrey
CR5 2HT
Telephone
020 8665 5252
Website
hfmhk.com
Email
croydon@hfmhk.com

Client	Parkside Property		
Project	Mitcham Fire Station 30 Lower Green West, Mitcham		
Title	Proposed North-East, South-East Elevations and Sections		
Drawn by	KR	Checked by	
Scale	1:100 @ A1	Date	May 2021
CAD Ref:	6724		

Dwg N° 6724-PL-301 Rev G

This page is intentionally left blank